



RAPID

Reporting Assistance and Process
Improvement Discussion

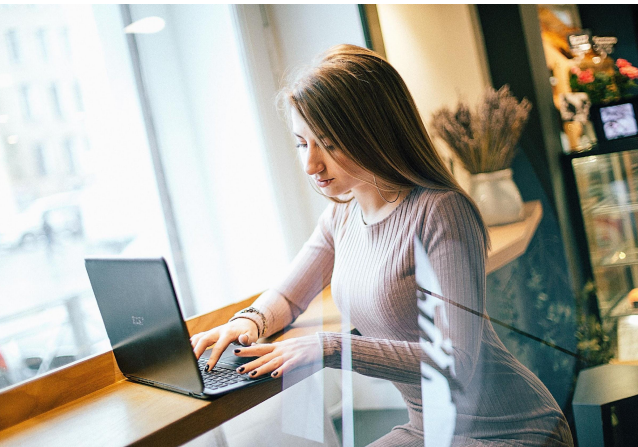
Session 1

Vision: Healthy Communities, Healthy People



About Us

Let's take a moment to get to know each other!



Required UDS Reporting

[Health Center Compliance Manual](#) Chapter 18:

The health center has a system in place for overseeing the operations of the Federal award-supported activities to ensure compliance with applicable Federal requirements and for monitoring program performance. Specifically:

- The health center has a system in place to collect and organize data related to the HRSA-approved scope of project, as required to meet HHS reporting requirements, including those data elements for Uniform Data System (UDS) reporting; and
- The health center submits timely, accurate, and complete UDS reports in accordance with HRSA instructions and submits any other required HHS and Health Center Program reports.

Meaning, it is each health center's responsibility to have the capabilities to collect and report the information required.



Clinical Quality Measures in the UDS

THE IDEAL

Measures set a base expectation for patient care, in the form of quality measures are based on US Preventive Services Task Force (USPSTF) or other evidence-based recommendations, across clinics, areas, patient populations, etc. that ideally brings all care toward high quality, equitable care.

THE REALITY

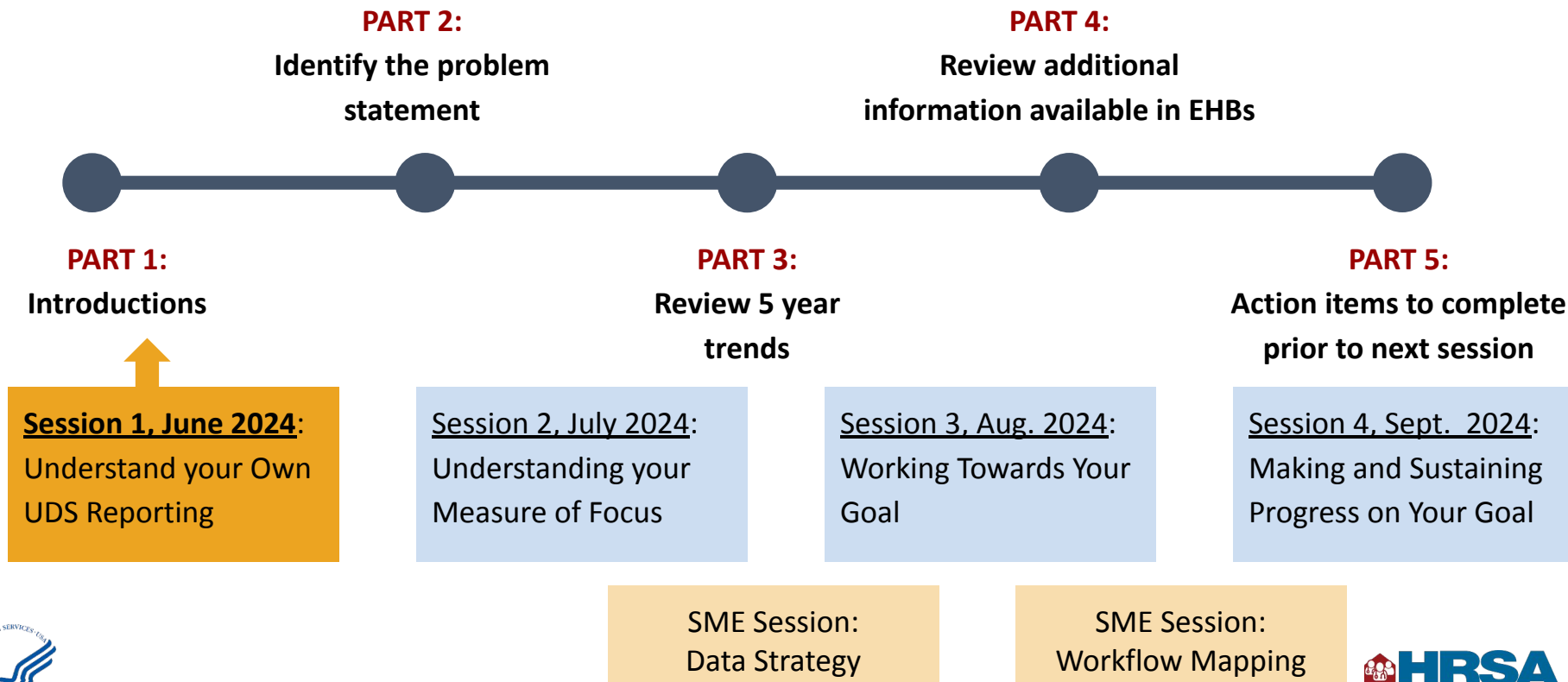


Measures might be more accurately described as measuring the *documentation* of patient care and whether *that documentation* aligns with measures that indicate high value care.



Require work across many levels-- addressing patient hesitation/ barriers, addressing staff hesitation/ barriers, addressing capacity, awareness, and structural barriers for all involved.

Roadmap for Today



Screening for Depression and Follow-Up Plan CMS 2v13

Percentage of patients aged 12 years and older screened for depression on the date of the encounter or up to 14 days prior to the date of the encounter using an age-appropriate standardized depression screening tool **AND if positive**, a follow-up plan is documented on the date of or up to two days after the date of the qualifying encounter



Numerator



Denominator



Part 2

Problem Statement

What is the problem we are trying to solve?

We are	Who are we?	We are a health center that serves...
Trying to	What are we trying to achieve?	Trying to increase the number of patients who receive...
but	What are the problems or barriers that are hampering progress?	But we have a hard time....
because	Describe the reason the problems or barriers persist (the root cause)	Because we often don't....
Which makes us feel	Describe the concerns or emotions this brings about	Which makes us feel like we...



First parts of problem statement



We are...

Chat in a very brief explanation of your health center.

Examples: We are a healthcare for the homeless clinic... OR We are a small, rural health center... OR We are a large, multi-site health center.



Trying to...

Chat in a very brief explanation of what you are trying to achieve around this measure.

Examples: Trying to improve the number of patients whose chart shows that they received...

First parts of problem statement



But...

Chat in a a brief synthesis of the barriers that have prevented you from achieving what you're trying to do.
Examples: But we rarely receive the needed historical or specialty records OR But we don't have a great outreach/recall process.



Because...

Chat in the reason the problems or barriers persist (the root cause of the barriers).
Examples: Trying to improve the number of patients with

Action Item 1

You will **write your own problem statement** using the template we just discussed. You'll submit this with your other action items between this session and session 2.



Part 3

Review 5 Year Trends

Reason to Review Reports and Historical Data



Look at the bigger picture.

Looking at the actual information that HRSA has helps situate the health center's experience/outcomes. Also assists with seeing your own larger trends.



Goal setting relies on context (what progress or rate is likely achievable?) May be monitoring monthly, but are benchmarks used? Are comparisons made?



DATA IS THE CURRENCY OF ADVOCACY. Standardized, reputable, reliable data is essential to communicating the importance and value of the work being done.

Many Reports and Insight Available!

Information on HRSA site and UDS Mapper

Available to the public on HRSA site and UDS Mapper site.

data.[HRSA.gov](https://data.hrsa.gov)



Search A-Z Index

Find Health Care ▾ Data ▾ Maps ▾ Tools ▾ Topics ▾ Help ▾

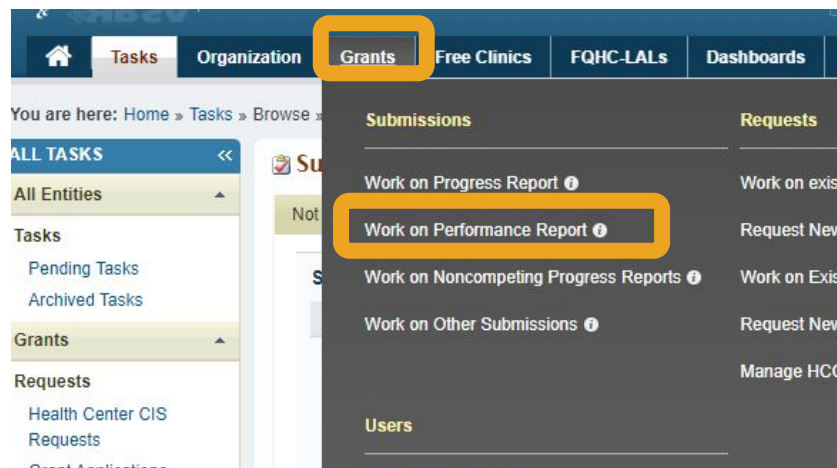
Home » Tools » Health Center Program UDS Data

Health Center Program Uniform Data System (UDS) Data

Health Center Program awardees and look-alikes are required to report on a core set of measures each calendar year as defined in the UDS, a standardized reporting system. HRSA uses UDS data to assess the impact and performance of the Health Center Program, and to promote data-driven quality improvement. Explore aggregated UDS data on health center patient characteristics, services provided, clinical processes and health outcomes, patients' use of services, staffing, costs, and revenues.

Reports in the Electronic Handbooks

Available to health centers, PCAs, and other health center program stakeholders.



Tasks Organization **Grants** Free Clinics FQHC-LALs Dashboards

You are here: Home » Tasks » Browse »

ALL TASKS <<

All Entities ▲

Tasks

- Pending Tasks
- Archived Tasks

Grants ▲

Requests

- Health Center CIS Requests
- Grant Applications

Submissions

- Work on Progress Report ⓘ
- Work on Performance Report ⓘ**
- Work on Noncompeting Progress Reports ⓘ
- Work on Other Submissions ⓘ

Requests

- Request New
- Work on Existing
- Request New
- Manage HC

Users



HRSA Health Center Data & Reporting Site: <https://data.hrsa.gov/tools/data-reporting/program-data/national>

UDS Mapper Website: <http://www.udsmapper.org/>, EHBs: <https://grants.hrsa.gov/2010/WebEPSExternal/Interface/common/accesscontrol/login.aspx>



data.HRSA.gov: Many Options

Health center, state, and national profiles.



Health Center Program UDS Data

View national, state/territory, and health center UDS data profiles for Health Center Program awardees and look-alikes.



Patient Characteristics Snapshot

View a national summary of UDS data on poverty level, insurance status, and race and ethnicity of patients served by Health Center Program awardees and look-alikes.



Special Populations Funded Programs

View UDS data from health centers that receive grant funding to serve special populations through the Health Care for the Homeless, Migrant Health Centers and Public Housing Primary Care programs.



Data Comparisons

View how one state/territory compares to the national average or to another state/territory on key UDS data points: total number of patients served by service category, target populations, and other patient characteristics.

National view of demographics and services by special population grant.

Comparison between states and territories on key statistics.

Screenshot from <https://data.hrsa.gov/tools/data-reporting>



Access State and Health Center Data Profiles

1. Select **program type**
2. Then select **State/ Territory**
3. Then scroll down and select either [State] **Program Awardee Data** to see the state or continue to scroll down to your health center, and click view data there.

Select Health Center Program Type: Program Awardee Data

Select State/Territory: Illinois

2021 Program Awardee Data

Illinois Program Awardee Data [HTTP](#)

Illinois Aggregated Health Center Data [ZIP](#)

2021 Illinois Health Centers

[View Data](#)

ACCESS COMMUNITY HEALTH NETWORK Chicago, Illinois



Health Center Program Grantee and LAL Profiles

Profiles **each state's** and **each health center's** performance

- Five years of data trends
- Service area maps
- Clinical and quality care award badges
- Program requirements (non-compliance conditions)

Shows **FIVE(!)** years of data for selected categories:

- Age and race/ethnicity
- Patient characteristics
- Services
- **Clinical data**
- Cost data

Also, by UDS Table!

Access health center program profiles on <https://data.hrsa.gov/tools/data-reporting/program-data>

Health Center Program Uniform Data System (UDS) Data

Clinical Data section includes:

- Patients with Medical Conditions
 - Calculated from Table 6A as a % of adult medical patients
- Quality of Care Measures in three areas:
 - Perinatal Health
 - Preventative Health Screening & Services,
 - Chronic Disease Management

Details on the calculations for all of this can be reviewed [here](#).

Expanded Summaries of 2022 UDS Data Tables

The UDS includes tables that provide consistent demographic, clinical, operational, and financial data. View national aggregated summaries of UDS health center awardee data. For more detailed descriptions of UDS tables, visit the UDS Resources page to access UDS manuals and other reporting documentation.

- View Full 2022 National Report
- Table 3A: Patients by Age and by Sex Assigned at Birth
- Table 3B: Demographic Characteristics
- Table 4: Selected Patient Characteristics
- Table 5: Staffing and Utilization
- Table 5: Selected Service Detail Addendum
- Table 6A: Selected Diagnoses and Services Rendered
- Table 6B: Quality of Care Measures
- Table 7: Health Outcomes and Disparities
- Table 8A: Financial Costs
- Table 9D: Patient Related Revenue
- Table 9E: Other Revenues

Go to the HRSA Electronic Reading Room to download publicly available Center Service Delivery and Look-Alike Sites that provide health ser

UDS Data Five-Year Summary

Select five-year national summaries of awardee data: Age and Race/

Scroll down!

Preventive Health Screening & Services					
Cervical Cancer Screening ²	55.95 %	56.53 %	51.00 %	52.95 %	53.99 %
Number of Cervical Cancer Screening Patients ²	3,996,179	4,184,135	3,807,992	4,025,004	4,084,322
Breast Cancer Screening			45.34 %	46.29 %	50.28 %
Number of Female Patients Aged 51 through 73 who had a mammogram to screen for breast cancer			1,438,426	1,557,112	1,719,755
Weight Assessment and Counseling for Nutrition and Physical Activity for Children and Adolescents ²	69.16 %	71.21 %	65.13 %	68.72 %	69.81 %
Number of Children Age 3-16 with Weight Assessment and Counseling for Nutrition and Physical Activity ²	3,549,030	3,870,784	3,032,670	3,602,381	3,824,381
Body Mass Index (BMI) Screening and Follow-Up Plan ²	70.15 %	72.43 %	65.72 %	61.32 %	61.04 %
Number of Adult Medical Patients Age 18 and Older with Body Mass Index (BMI) Screening and Follow-Up ²	10,860,741	11,763,627	10,118,632	9,823,612	9,960,541
Percent Adults Screened for Tobacco Use and Receiving Cessation Intervention ²	88.09 %	87.17 %	83.43 %	82.34 %	84.60 %
Number of Adult Medical Patients Age 18 and Older Screened for Tobacco Use and Received Cessation Counseling ²	10,576,939	11,060,418	10,085,837	10,747,935	11,228,127
Colorectal Cancer Screening ²	44.11 %	45.56 %	40.09 %	41.93 %	42.82 %
Number of Patients Screened for Colorectal Cancer ²	2,491,769	2,741,612	2,448,976	2,680,583	2,769,337
Childhood Immunization Status ²	39.44 %	39.75 %	40.42 %	38.06 %	33.23 %
Number of Children Under Age 3 Who Received Appropriate Childhood Immunizations ²	156,116	163,156	147,992	145,398	128,032
Screening for Depression and Follow-Up Plan ²	70.57 %	71.61 %	64.21 %	67.42 %	70.02 %
Number of Patients Screened for Clinical Depression and if Positive had a Follow-Up Plan Documented ²	10,836,660	11,569,790	10,280,203	10,949,757	11,200,559



Action Item 2

Access the data profile for both **your state** and **health center** on the [HRSA Health Center Program UDS Data site](#). You'll use that information to answer a couple of questions before Session 2.





Part 4

Review Additional Information in the EHBs



Availability of UDS Data and Reports

UDS Report	Timing	Available To	Level Available*	Source
Finalized Health Center Tables and eXtensible Markup Language (XML) Data Files	June	HC	Awardee: HC Look-Alike: HC	Electronic Handbooks (EHBs)
UDS Health Center Trend Report	August	HC	Awardee: HC, S, N Look-Alike: HC, N	EHBs
UDS Summary Report	August	HC	Awardee: HC, S, N Look-Alike: HC, N	EHBs
UDS State and National Rollup Reports	June	HC, Public	Awardee: S, N Look-Alike: N	EHBs, HRSA website
Grantee and Look-Alike Profiles	August	Public	Awardee: HC, S, N Look-Alike: HC, N	HRSA website
Grantee Comparison Data Views	August	Public	Awardee: HC, S, N Look-Alike: HC, N	HRSA website
UDS Health Center Performance Comparison Report	August	HC	Includes all levels	EHBs

* HC = Health Center; S = State; N = Nation



Health Center Tables and Data Files



Accessing Prior Year Data and Reports

1

2

Grants

Submissions

- Work on Progress Report
- Work on Performance Report**
- Work on Noncompeting Progress Reports
- Work on Other Submissions

Requests

- Work on existing Prior Approval
- Request New Prior Approval
- Work on Existing Health Center H80 CIS
- Request New Health Center H80 CIS
- Manage HCCN PHCs

Users

View Authorized Users


- The UDS is the *Performance Report* for your H80 grant (or LAL grant).
- Hover over **Grants** tab (1), then under *Submissions* click on **Work on Performance Report** (2).
- The next page has the Performance Report (3) for each year.

3

Submission Name	Submission Type	Organization	Grant #	Tracking #	Reporting Period	Deadline	Submitted Date	Status	Options
UDS Performance Report	Performance Reports	PUBLIC HEALTH MANAGER PART	H80000019	H80000019	01/01/2021 - 12/31/2021	04/22/2022	04/22/2022	Submitted	Performance Reports
UDS Performance Report	Performance Reports	PUBLIC HEALTH MANAGER PART	H80000019	H80000019	01/01/2020 - 12/31/2020	03/30/2021	03/29/2021	Submitted	Performance Reports
UDS Performance Report	Performance Reports	PUBLIC HEALTH MANAGER PART	H80000019	H80000019	01/01/2019 - 12/31/2019	03/25/2020	03/24/2020	Submitted	Performance Reports



Review and Reports List Page

 **Review and Report List Page**

▶ H80CS002942023/v2: Cabin Creek Health Center, Inc., Dawes, WV

Reports

Report Name	Description	Action
UDS Data File in XML	Submitted Raw UDS Data File in XML format.	Download
UDS Data File - Excel Format	Download a copy of your health centers' submitted UDS Performance Report in an excel format including data in all tables and forms.	Download
UDS Health Center, State, National Summary Report	The Summary Report is a 'dashboard' report intended to describe each health center in a statistical manner. Calculations of key measures are derived from their own organization's current reporting on the UDS. The measures are broken out into two main categories: 1) Demographic and Clinical Data (Patients, Visits, Staffing and Clinical Information) and 2) Fiscal Information (Costs and	Not Available



Other reports will be available this summer!



Health Center Tables for CY2023

- **One calendar year of health center data for each of the 11 UDS tables and three forms:**
 - Patient demographics, staffing, services provided, clinical processes and outcomes, patients' use of services, costs, and revenues
 - Forms:
 - Appendix D: Health information technology (HIT) capabilities; Appendix E: Other Data Elements; Appendix F: Workforce
- **UDS tables are used to:**
 - Evaluate health center performance for one calendar year to identify accomplishments and opportunities for quality improvement
 - Document the operation and performance of health center(s)
 - Calculate metrics relevant to each health center



Available from EHBs in June-ish Each Year

Several Options for Format/ Views

- Scroll down on this page if you just want to view an individual table in the page itself
- Download XML or Excel data file: A data file of finalized calendar year data that can be used for customized review of data
- These data are:
 - Used to aggregate your data with that of other health centers to provide state and national snapshots
 - Available to Health Centers and to PCAs, to analyze data for communities and states

Review and Report List Page

H80CS002942023/v2: Cabin Creek Health Center, Inc., Dawes, WY

Reports

Report Name	Description	Action
UDS Data File in XML	Submitted Raw UDS Data File in XML format.	Download
UDS Data File - Excel Format	Download a copy of your health centers' submitted UDS Performance Report in an excel format including data in all tables and forms.	Download
UDS Health Center, State, National Summary Report	The Summary Report is a 'dashboard' report intended to describe each health center in a statistical manner. Calculations of key measures are derived from their own organization's current reporting on the UDS. The measures are broken out into two main categories: 1) Demographic and Clinical Data (Patients, Visits, Staffing and Clinical Information) and 2) Fiscal Information (Costs and...	Not Available

Or scroll down to where you can click on any individual table for the year.



Available from EHBs in June-ish Each Year



Do you download prior year data each year?

If so, when and what do you do with it? What value does it provide?

What is it's value beyond what you have in your own reports?

Action Item 3

Access or download your UDS data *for the measure of focus on Table 6B*. You will use this to compare to your own prior years and state averages, which you'll then use to answer some questions.

UDS Rollup Report



UDS Rollup Report

- 1 Structured **similarly** to the UDS tables
- 2 All data elements reported on each of the UDS tables and forms are used
 - Patient profile
 - Staffing full-time equivalent (FTE), staff tenure, and utilization
 - Clinical profile
 - Financial profile
 - HIT and Other Data Elements forms
- 3 **Compiles and aggregates annual data:** Reported by health centers at national, state, and grant (HCH, MHC, PHPC) levels
- 4 Calculates **averages** (for some tables)

Typically available in EHBs and on HRSA data site in Summer

Value of the UDS Rollup Report

- Comparable with health center's own data to place data in context
- Helpful for **calculating additional variables** that may not be provided in standard available reports
- Provides **insights** into services and rates at state or national level
- Reflects what is reported to Congress to meet **legislative and regulatory requirements**
- Evaluated by stakeholders (HRSA, health centers, researchers, and others) as a one-year snapshot of Health Center Program performance



UDS Rollup Report Snapshot: Table 6B

Section D - Cervical and Breast Cancer Screening				
Line	Cervical Cancer Screening	Total Female Patients Aged 24 through 64 (a)	Estimated Number of Patients Tested	Estimated % of Patients Tested
11.	MEASURE: Percentage of women 24-64 years of age who were screened for cervical cancer	7,783,533	4,278,162	54.96%
Line	Breast Cancer Screening	Total Female Patients Aged 52 through 74 (a)	Estimated Number of Patients with Mammogram	Estimated % of Patients with Mammogram
11a.	MEASURE: Percentage of women 52-74 years of age who had a mammogram to screen for breast cancer	3,534,508	1,851,976	52.40%

Section L – Depression Measures				
Line	Preventive Care and Screening: Screening for Depression and Follow-Up Plan	Total Patients Aged 12 and Older (a)	Estimated Number of Patients Screened for Depression and Follow-up Plan Documented as Appropriate	Estimated % of Patients Screened for Depression and Follow-up Plan Documented as Appropriate
21.	MEASURE: Percentage of patients 12 years of age and older who were (1) screened for depression with a standardized tool <i>and</i> , if screening was positive, (2) had a follow-up plan documented	16,251,419	11,636,325	71.60%

This is a national-level example, you can also access your **state** or health center-specific rollup.

Provides **% of patients who meet the measure** in the final column.

Provides estimated **Raw Numbers** for Numerator, because some are reported by samples.

Table 7 Rollup provides clinical quality detail as well.

Rollups are in UDS table format with additional information added to the table.

UDS Summary Report



UDS Summary Report

1

Provides a calendar year summary and analysis of health centers' UDS data using measures calculated across tables

2

Presents data in six categories

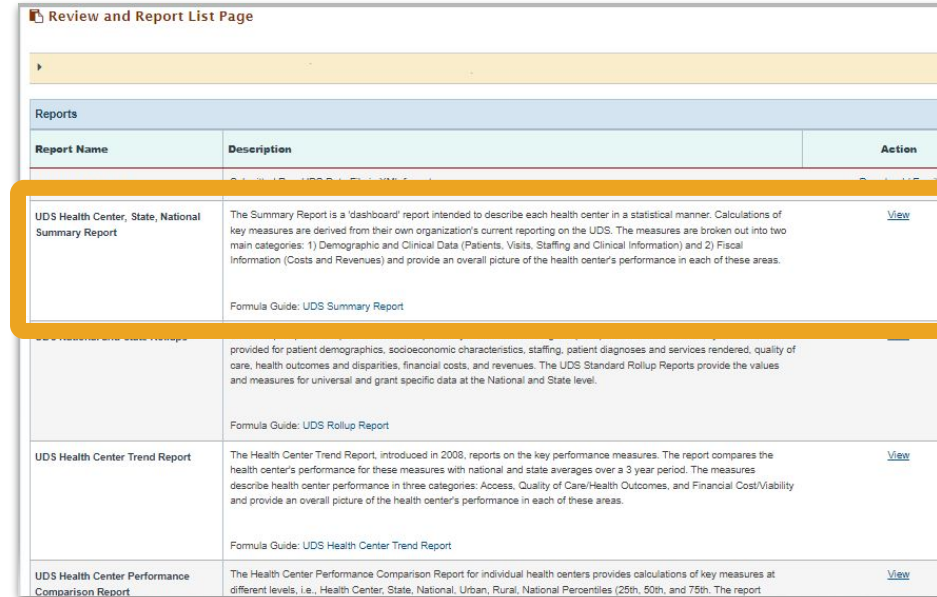
- Patients, Visits, Staffing, Quality of Care Indicators/
Health Outcomes, Costs, and Revenue, and Adjustments

- Includes option for comparisons

- Health center compared to **state** and **nation**

3

Formula Guide is available in the EHBs



Review and Report List Page		
Reports		
Report Name	Description	Action
UDS Health Center, State, National Summary Report	The Summary Report is a 'dashboard' report intended to describe each health center in a statistical manner. Calculations of key measures are derived from their own organization's current reporting on the UDS. The measures are broken out into two main categories: 1) Demographic and Clinical Data (Patients, Visits, Staffing and Clinical Information) and 2) Fiscal Information (Costs and Revenues) and provide an overall picture of the health center's performance in each of these areas. Formula Guide: UDS Summary Report	View
UDS Health Center State Report	provided for patient demographics, socioeconomic characteristics, staffing, patient diagnoses and services rendered, quality of care, health outcomes and disparities, financial costs, and revenues. The UDS Standard Rollup Reports provide the values and measures for universal and grant specific data at the National and State level. Formula Guide: UDS Rollup Report	View
UDS Health Center Trend Report	The Health Center Trend Report, introduced in 2008, reports on the key performance measures. The report compares the health center's performance for these measures with national and state averages over a 3 year period. The measures describe health center performance in three categories: Access, Quality of Care/Health Outcomes, and Financial Cost/Viability and provide an overall picture of the health center's performance in each of these areas. Formula Guide: UDS Health Center Trend Report	View
UDS Health Center Performance Comparison Report	The Health Center Performance Comparison Report for individual health centers provides calculations of key measures at different levels, i.e., Health Center, State, National, Urban, Rural, National Percentiles (25th, 50th, and 75th). The report	View

Typically available in the EHBs in August

Value of the UDS Summary Report

Report includes data from each of the 11 UDS tables and 3 forms

Compare health centers' data with national and state averages, side by side

Inclusive of both raw values and percentages for some tables



Percentages are often more useful than raw numbers when comparing the health center to the state or the nation

	Health Center		State		National	
PATIENTS						
...						
VISITS						
Number/Percent Visits						
Total Visits	110,184		790,646		132,535,752	
Medical	80,086	72.68%	548,524	69.38%	87,280,040	65.85%
Dental	14,135	12.83%	103,287	13.06%	15,449,941	11.66%
Mental Health	14,241	12.92%	111,316	14.08%	16,022,483	12.09%
Substance Use Disorder	-	-	8,362	1.06%	1,765,153	1.33%
Other Professional	798	0.72%	2,155	0.27%	3,549,102	2.68%
Vision	-	-	3,558	0.45%	1,178,520	0.89%
Enabling Services	924	0.84%	13,444	1.70%	7,290,513	5.50%
Total Clinic Visits	97,388		725,048		114,990,713	
Medical	74,280	76.27%	529,313	73.00%	78,935,048	68.64%

Raw Value

Percentage



UDS Summary Report: Clinical Quality Measures

	Health Center		State		National	
PATIENTS						
Number/Percent of Patients by Sexual Orientation						
% Gay + Lesbian + Bisexual + Something else	518	5.18%	11,051	4.97%	761,904	4.25%
% Straight	9,489	94.82%	211,283	95.03%	17,149,031	95.75%
% Don't know + Choose not to disclose	1,418	4.52%	20,282	4.95%	3,548,976	11.75%
% Unknown	19,962	↑ 63.60%	166,746	● 40.73%	8,733,367	● 28.92%
Number/Percent of Patients by Gender Identity						
% Male	4,203	36.74%	113,471	40.50%	8,930,485	40.92%
% Female	7,204	62.97%	165,503	59.07%	12,808,491	58.69%
% Transgender + Other	90	0.78%	2,169	0.77%	347,471	1.57%
% Choose not to disclose	27	0.09%	2,122	0.52%	919,039	3.04%
% Unknown	19,863	↑ 63.28%	126,097	● 30.80%	7,187,792	● 23.81%



Above is prior data. 2023 UDS data will be available in reports soon!





What is the value of the information from the Summary Report that we just reviewed?

UDS Health Center Performance Comparison Report



UDS Health Center Performance Comparison Report

1

Provides a calendar-year summary and analysis of **health centers' UDS data** and performance

2

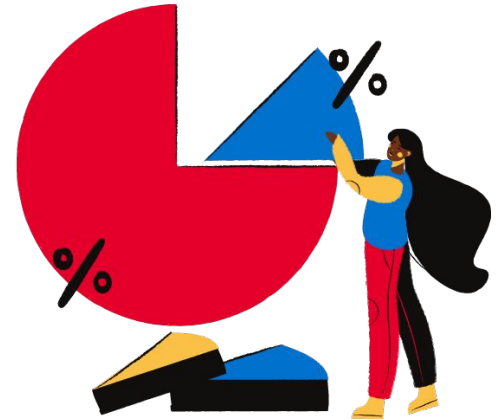
Provides two sets of data

- Quality of care indicators/health outcomes
- Cost of care indicators

3

Presents several levels of comparisons

- Healthy People 2020 + 2030 goals (where available)
- Averages for various comparison groups
- Percentiles for financial data
- Adjusted quartile ranking per clinical measure



Typically available from EHBs in August

Value of the UDS Health Center Performance Comparison Report

The performance measures:

- Report quality of care/health outcome and cost measures
- Are used to **compare against national benchmarks** and performance of **health center peers**
- Show health centers' HRSA-generated **adjusted quartile rankings** for clinical measures
- Include national percentile references for cost data

This report is uniquely useful for seeing how your health center compares to peers.



UDS Health Center Performance Comparison Report: Quality of Care Indicators/Health Outcomes

Individual health center performance

Healthy People 2020/ 2030 Goals

Average for comparison groups

Adjusted Percentiles

	Health Center	Healthy People 2020 Goals ⁴	Healthy People 2030 Goals ⁵	Averages						Health Center Adjusted Quartile ⁵	
				CO	National	Rural	Size	Sites ¹	Special population Agricultural Workers ²		Special population Homeless ³
							10,000-19,999	11-15	Below 25%		Below 25%
				n = 19	n = 1373	n = 568	n = 405	n = 201	n = 1339	n = 1296	
QUALITY OF CARE INDICATORS/HEALTH OUTCOMES*											
Preventive Health Screenings and Services											
Childhood Immunization Status*	38.51%	-	-	45.44%	38.06%	36.26%	36.98%	39.36%	37.70%	38.04%	2
Cervical Cancer Screening*	57.82%	93.00%	84.30%	57.17%	52.95%	47.30%	51.38%	53.95%	52.90%	53.13%	2
Breast Cancer Screening	28.44%	-	-	47.21%	46.29%	46.84%	46.48%	48.19%	46.16%	46.36%	4
Weight Assessment and Counseling for Nutrition and Physical Activity for Children and Adolescents*	58.63%	-	-	71.17%	68.72%	65.12%	67.81%	70.44%	68.89%	68.79%	3
Body Mass Index (BMI) Screening and Follow-Up Plan*	72.06%	-	-	58.78%	61.32%	64.30%	63.46%	64.10%	61.21%	61.49%	2
Tobacco Use: Screening and Cessation Intervention*	68.53%	-	-	90.14%	82.34%	81.81%	81.45%	84.32%	82.21%	82.50%	4
Colorectal Cancer Screening*	38.26%	70.50%	74.40%	41.07%	41.93%	43.08%	42.63%	43.55%	42.14%	42.17%	2
HIV Screening	20.54%	-	-	37.04%	38.09%	22.05%	34.66%	38.74%	38.45%	37.77%	3
Screening for Depression and Follow-Up Plan*	63.94%	-	13.50%	71.82%	67.42%	66.02%	66.28%	70.37%	67.53%	67.52%	3

Health Center Program



This Information Informs Rankings and Badges



Uniform Data System (UDS) Health Center Adjusted Quartile Ranking

<https://bphc.hrsa.gov/datareporting/reporting/ranking.html>



Community Health Quality Recognition (CHQR) Overview

<https://bphc.hrsa.gov/initiatives/advancing-health-center-excellence/community-health-quality-recognition-chqr-overview>



Part 5

Wrapping Up: Action Items Prior to Our Next Session



Complete Action Items Before Next Session



Develop your problem statement in **one sentence** using the following template:

We are a health center that serves *[describe area and patient population]* trying to *[describe the improvement you are trying to make on the measure of focus]* but *[describe the problems or barriers holding back that improvement]* because *[describe the root cause of the barriers or the underlying cause that the challenge persists]* which makes us feel *[how your health center feels about this problem]*.



Pull your reports to see your recent performance and trends

Log into the EHB to access recent data and reports.

Visit the [Health Center Program Uniform Data System \(UDS\) Data Overview](#) for national, state, and health center trends.

Submit Action Items before Next Session

**Complete 5
question
Google Form
with Action
Items.**

- Select your health center.
- Select the measure we're working on.
- Share your problem statement.
- Share your CY2023 performance on our measure of focus.
- Share whether your current rate is above or below the national average.
- Share whether you have been trending up or down and by how much.



Next Session



Review measure in detail, deep diving specifications.



Review FAQs for our measure, discuss the answers and how additional information can be found.



Mapping your current process to identify opportunities for improvement.

Accessing UDS Data

- Reports and information accessible only to health centers: Through [EHBs](#) using your secure log-in.
- BPHC Training Website:
<https://bphc.hrsa.gov/data-reporting/uds-training-and-technical-assistance>
 - Tools and resources to assist in UDS reporting, including training modules, fact sheets, UDS Manual, Webinar schedule, etc.
- Publicly available UDS data: On [HRSA website](#)
 - [National Data](#)
 - [State Rollups and Profiles](#)
 - ✓ Remember, you can access your health center data by selecting your state then scrolling down to find your health center and clicking View Data
 - [Comparison Data Views](#)
- Service area data: Through [UDS Mapper](#)



Assistance Available

UDS Support Center

- Assistance with UDS reporting content questions
- 866-UDS-HELP (866-837-4357)
- udshelp330@bphcdata.net

HRSA Call Center

- Assistance with EHBs account and user access questions
- 877-Go4-HRSA (877-464-4772), Option 3
- <http://www.hrsa.gov/about/contact/hbhelp.aspx>

Health Center Program Support

- Assistance with EHBs electronic reporting or EHB account issues
- 877-464-4772, Option 1
- <http://www.hrsa.gov/about/contact/bphc.aspx>

UDS Mapper

- Assistance with the online service area mapping tool
- <http://www.udsmapper.org/contact-us.cfm>

